

ALL YOU CAN THINK OF  
GLASS INTERIORS





# ABOUT ME



At Baranska Design we pride ourselves on being one of the most technologically advanced manufacturers of handmade glass in Europe. Our designer, Edyta Baranska has spent almost 25 years working with glass, she specialises in the technique of fusing glass.

We have developed a wide variety of products to cater for different tastes and all using high quality fused glass. We have the ability to produce in limited or long series; glass tables, mirrors, lamps and accessories, as well as glass wall partitions and other interior objects for hotels, restaurants, bars and the home. We also provide interior glass services for office and retail environments.

Our professional in-house team design has a deep understanding of international interior trends and fashions, and we use this knowledge to create designs that match all seasons.

Highly finished, the technical advances used to realise our unique collection of fused glass furniture and accessories provides a new level of sophistication for lovers of designer furniture everywhere.





# LIGHTING



The beauty of glass is in its relationship to light, in how it filters, diffuses, reflects and refracts light. Glass has fascinated artists and craftsmen for thousands of years and glass technology continues to evolve, presenting ever new possibilities. Yet, light and glass pose a challenge to designers. This medium demands specialist knowledge and artisanal skill. Edyta Baranska Studio has been designing lighting for public spaces, hotels, restaurants and private residences for many years. Edyta understands glass and is passionate about glass.

Our bespoke projects range from major lighting installations with thousands of glass elements to intimate solutions for private living rooms, each item individually designed to the character of the interior and the tastes of the client. Our award-winning designs and creations are well known in London, Milan, New York, Warsaw and Dubai.

In 2013, we introduced product collections, including chandeliers, flush-mounted lights, floor lamps and wall lamps. Our range of lighting comes equipped with LED or fibre technology meeting the highest international standards.



PENDANT LAMP



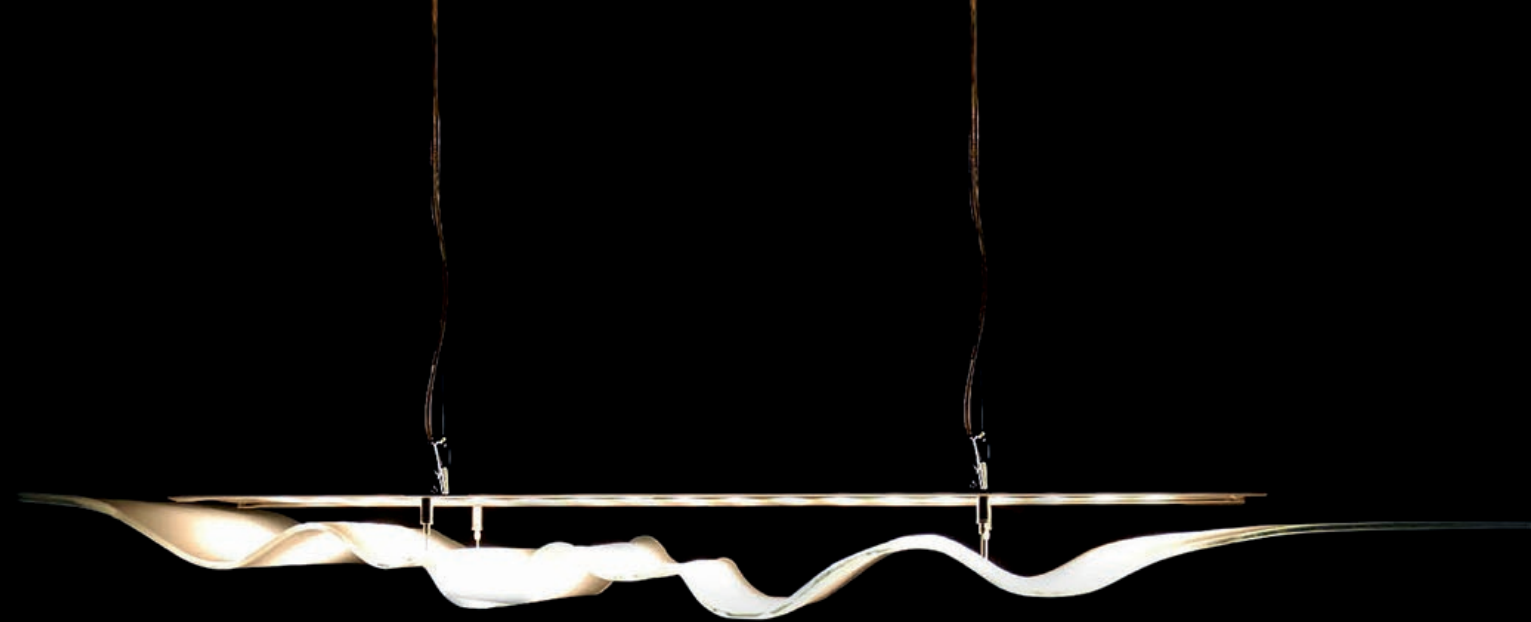
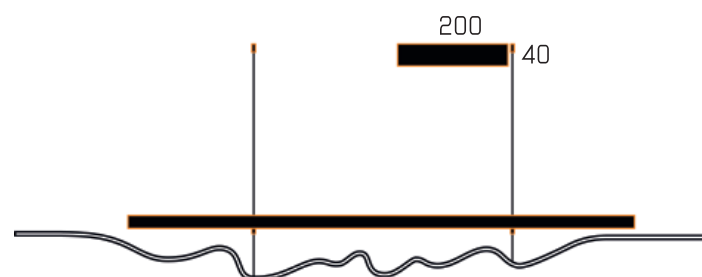
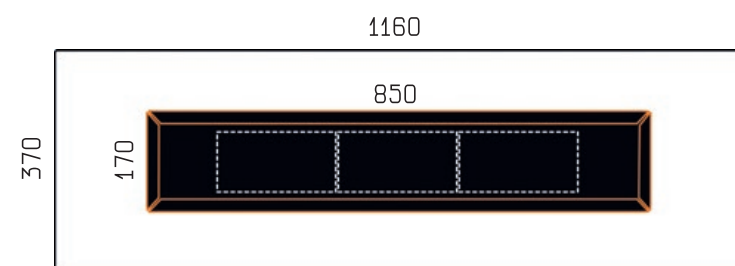
# WAVE

WAVE encapsulates free-flowing undulations in nature, from wind-swept lake surfaces to shifting desert sand-dunes. Our designer was inspired to imitate the rippling of soft, ethereal fabric, frozen in a moment of time. The rigidity of the medium belies its fluidity of form. Our prototype won prize for best design at All on Design.

Following its success in Milan and London, we expanded the WAVE collection to include floor lamp, wall-sconce and a modular system for lighting reception rooms, offices, conference rooms and other large, interior spaces. Equipped with the latest in LED technology, WAVE emits up to 5000 lumens and will illuminate any room.

## Materials

metal frame  
handmade cast glass  
LED module



## ▼ Detail





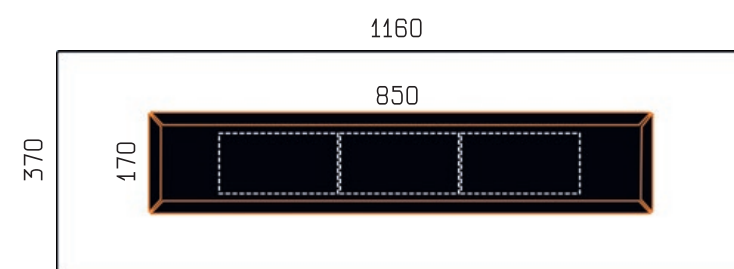
PENDANT LAMP



# WAVE



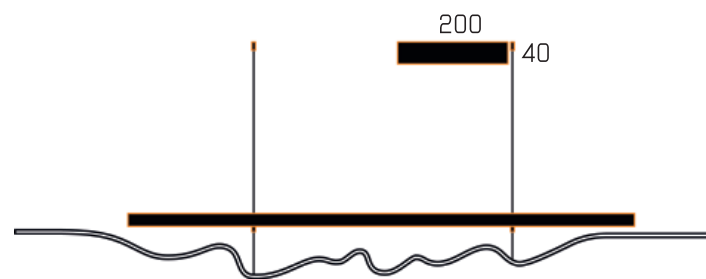
## Materials



frame  
painted steel or stainless steel

handmade glass  
optiwhite or grey

LED  
600 lux ; 2700-4000 K





PENDANT LAMP



# IRIS

The story behind IRIS is one of those chance incidents that fuel human creativity. The designer was creating a glass sculpture of a dancing girl when the skirt accidentally reversed in the kiln.

And so, IRIS was born: a pendant lamp-shade of falling fabric and softly diffused light.

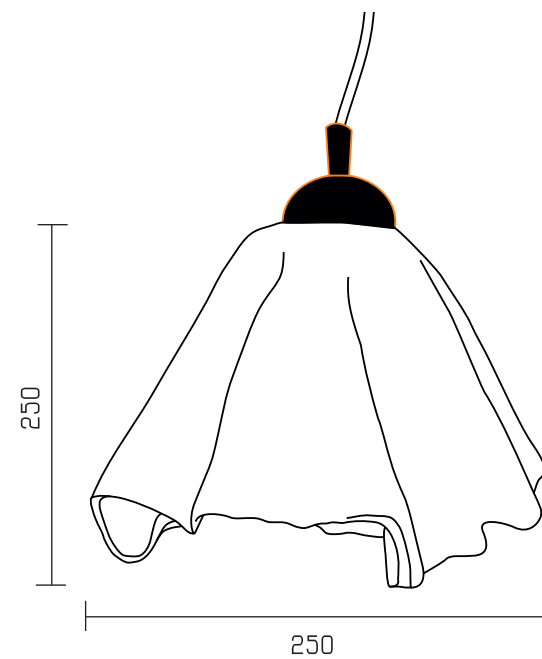


## Materials

metal  
painted steel or stainless steel

handmade glass  
optiwhite, grey, blue, red

bulb E27





PENDANT LAMP



# LILI

LILI was designed as a modular pendant lamp to be suspended above reception desks and kitchen counter-tops in multiple sets, usually of 2, 3, 5, or more pieces.

LILI can be combined with the IRIS lamp, and with different coloured electrical cables, to create distinctive visual appeal. As with IRIS, LILI lamps can be fitted to accommodate either incandescent light bulbs or LEDs.

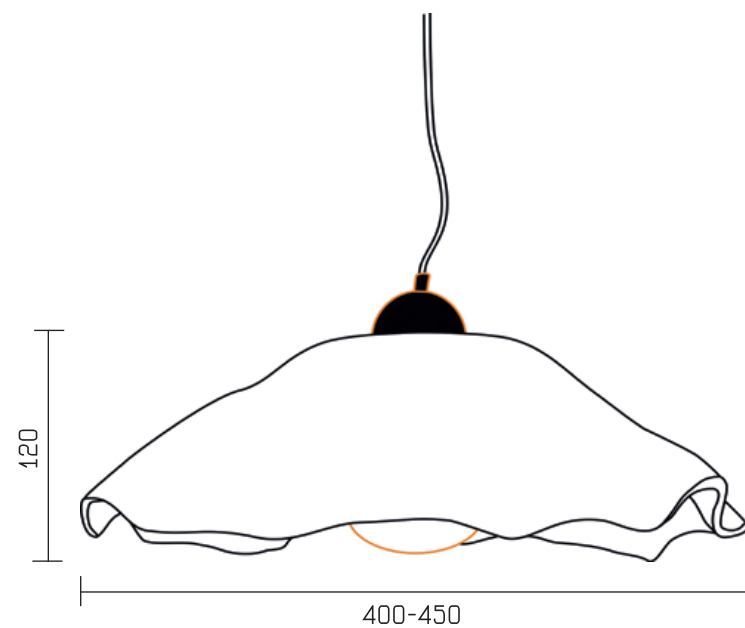


## Materials

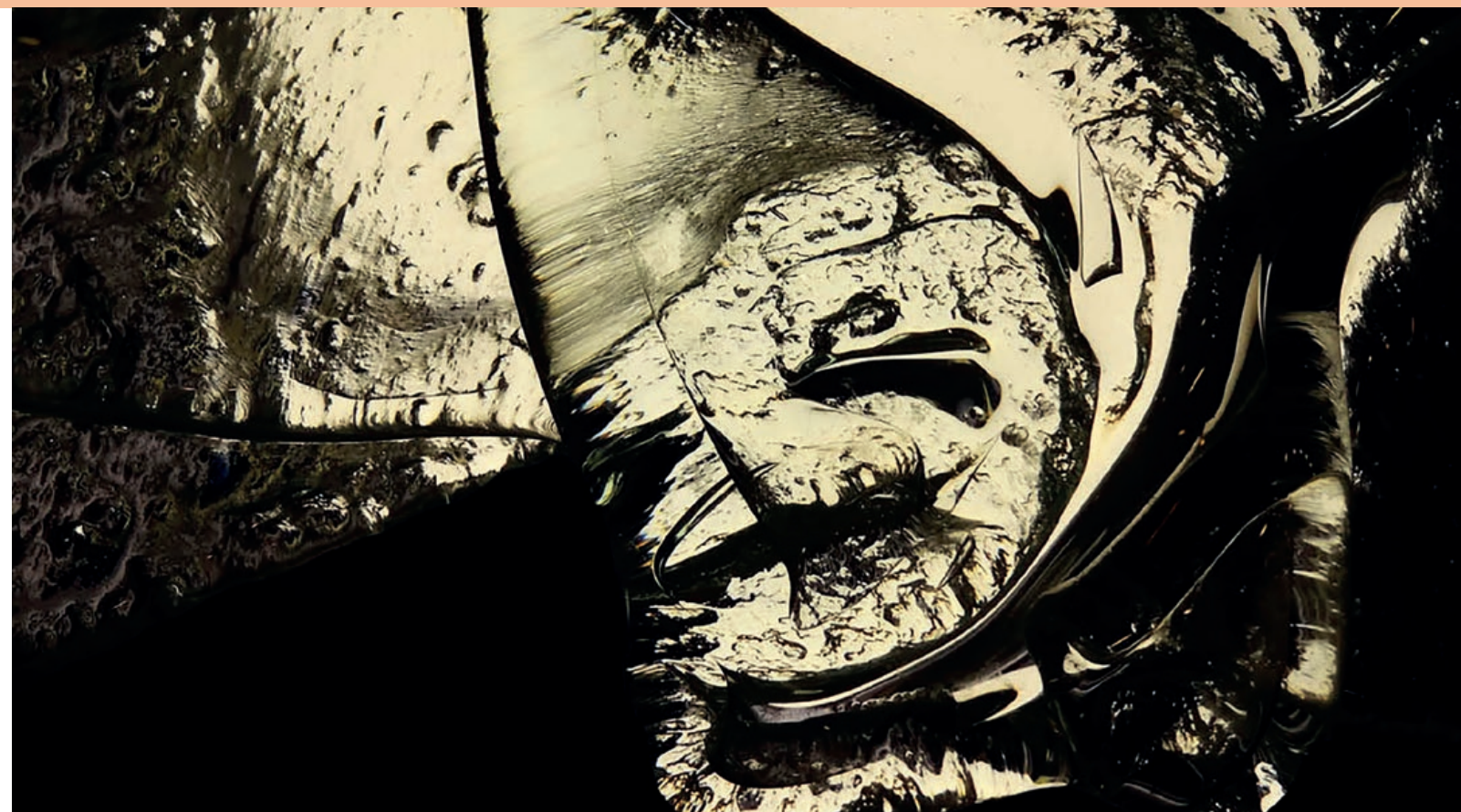
metal  
painted steel or stainless steel

handmade glass  
optiwhite, grey

bulb E27



## ▼ Detail





FLOOR LAMP



# BREEZE

BREEZE is a floor lamp created to complement modern interiors.

Columns of fractured ice glistening with melt-water grace any space with a refreshing coolness. In our collection, BREEZE comes with either steel or wooden frame, and is available in three sizes.

BREEZE is available on request as a wall sconce with a height of between 30mm and 2600mm.



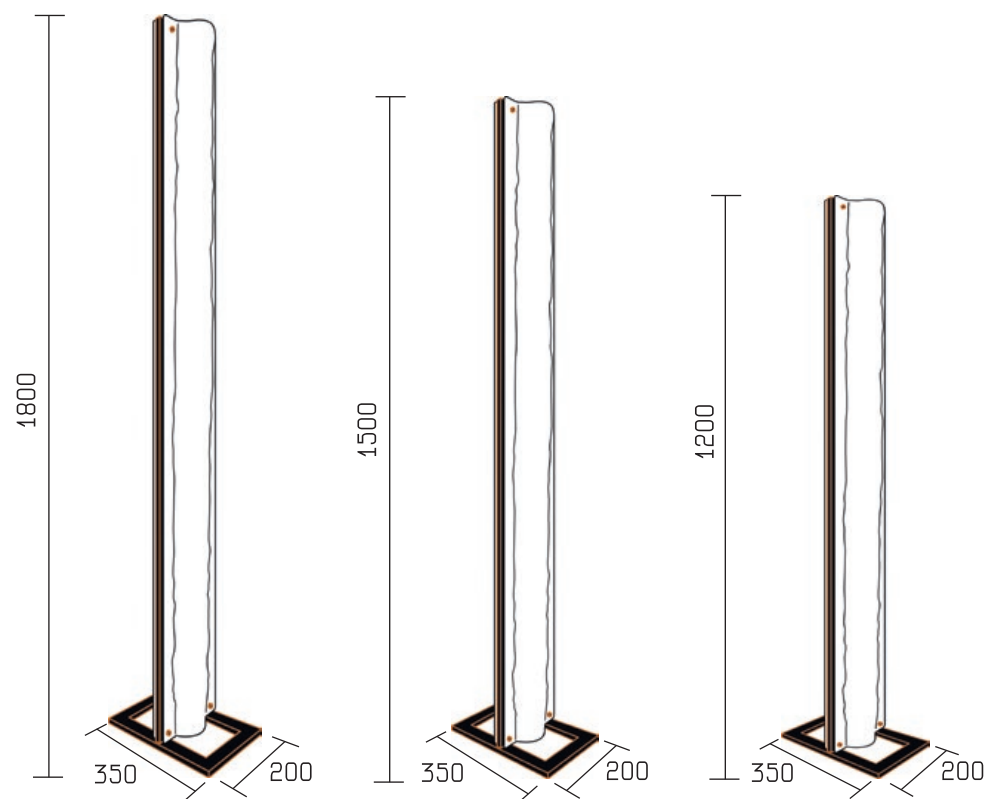
## Materials

metal frame  
black painted steel,  
stainless steel, wood

handmade glass  
optiwhite, grey

LED 2700-4000K

▼ Detail







GLASS CHANDELIER



# SEA FLOWERS

SEA FLOWERS was first imagined, created and installed in 2010 for the atrium in the Hilton Hotel. Like an aquarium of delicate, floating, bioluminescent life-forms in the deep ocean, SEA FLOWERS brings a serene beauty to any inner space.

Consisting of over 20,000 handcrafted glass elements, illuminated by fibre optics, the first installation was suspended in a multi-floor space with a vertical drop of 15 metres, and a weight of 1500 kilograms.

SEA FLOWERS now enters our lamp collection in a range of sizes suited to any interior.

## Materials

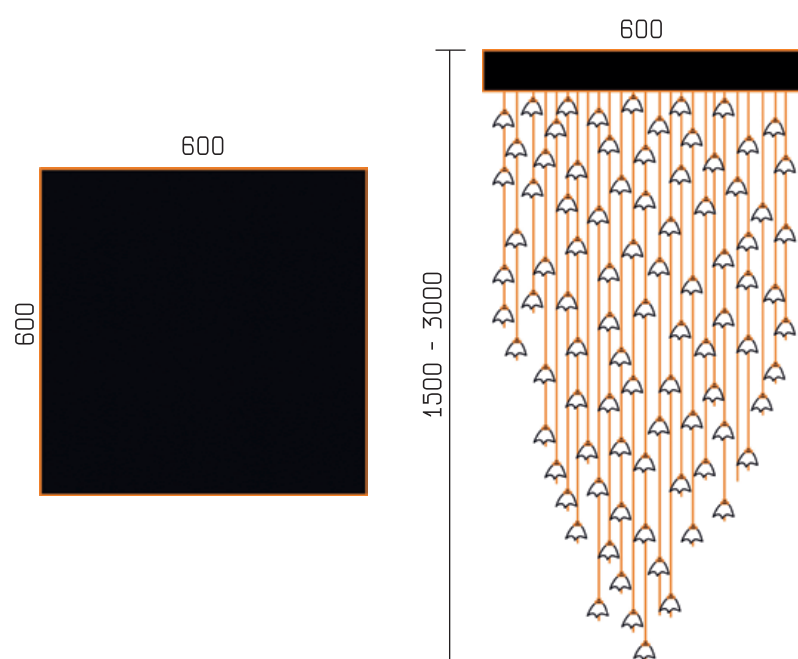
metal frame

painted steel (any colour),  
stainless steel

handmade glass

optiwhite, white, black, gold,  
blue, red

Power LED 2700-4000K







GLASS CHANDELIER



# SEA FLOWERS

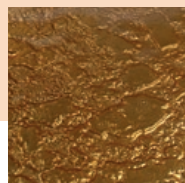


Materials

▲ Detail

bespoke colours and sizes available

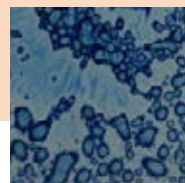
BASIC  
COLORS



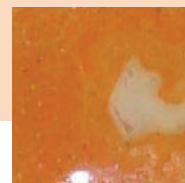
GOLD



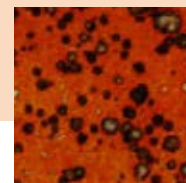
CLEAR



BLUE I



AMBER



RED I







GLASS CHANDELIER



# SEA FLOWERS

SEA FLOWERS is also available in a horizontal configuration.

This cascading curtain of light was originally designed to illuminate hotel reception desks and is now available in our collection.



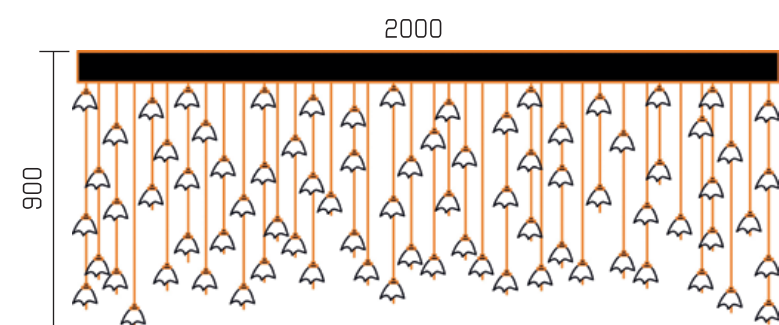
## Materials

metal frame  
painted steel (any colour),  
stainless steel

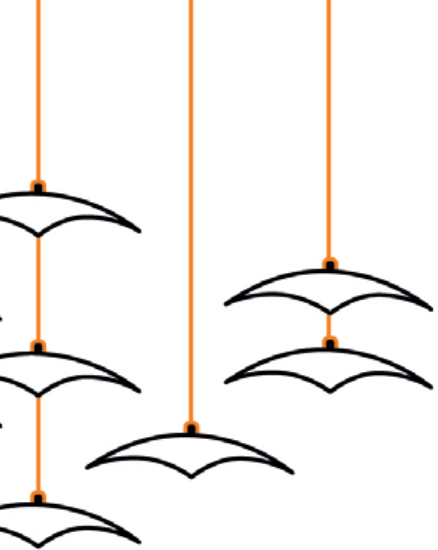
handmade glass  
optiwhite, white, black, gold,  
blue, red

Power LED 2700-4000K

## ▼ Detail





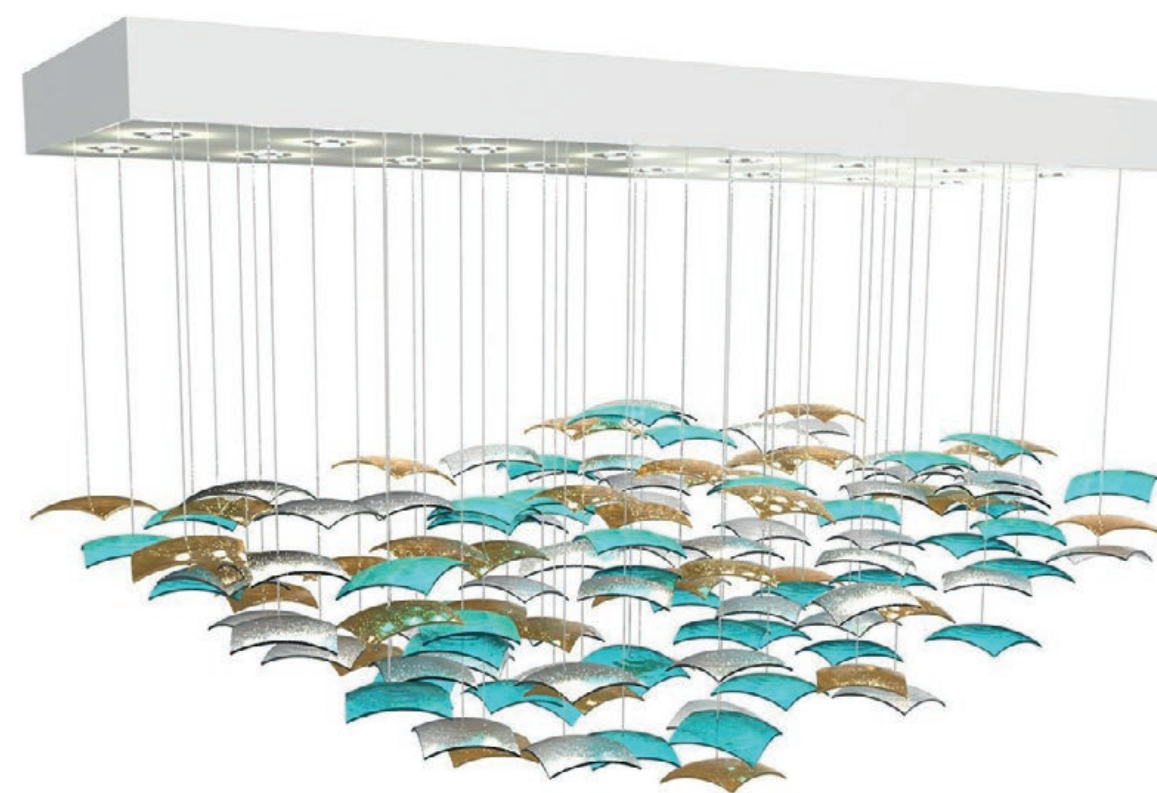


GLASS CHANDELIER

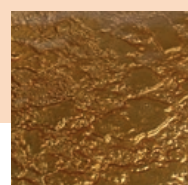


# SEA BIRDS

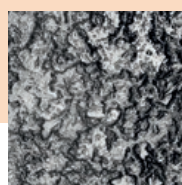
Sea Birds is a sister project of Sea Flowers. In keeping with current trends, the form is simpler and more geometric, based on a square projected onto a sphere. Its lines fit with any modern interior. Sea Birds is available on request in a variety of sizes.



## BASIC COLORS



GOLD



SILVER



BLUE II



PINK



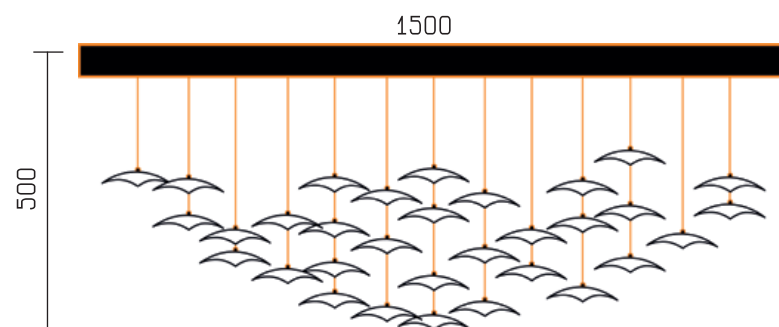
WHITE

## Materials

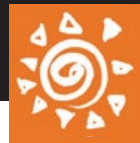
metal frame  
painted steel (any colour),  
stainless steel

handmade glass  
optiwhite, white, blue, gold

Power LED 2700-4000K







# ART DECO B

## DECADENCE COLLECTION

The technology of glass colouration, known to the ancient Egyptians, reached its zenith in the hands of Venetian glassmakers in 13th Century Murano. Today, we merge that richness of glass colouration with the leading-edge technology of fusing multiple layers of glass at high temperature to create the innovative and stunning look of our designer panels of glass.

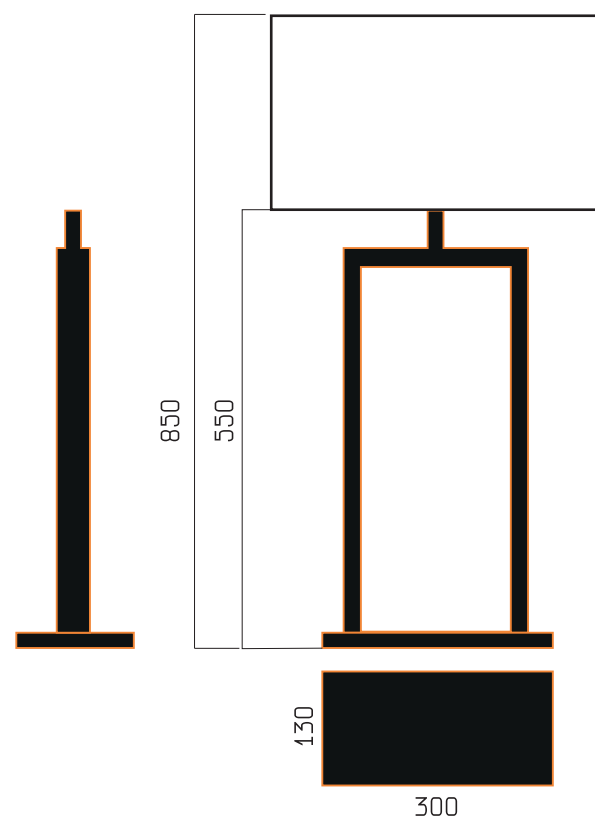
Our latest table-lamps collection are statement pieces which bring elegance and style to every interior.

### Materials

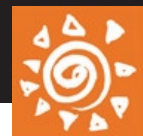
painting steel or stainless steel

handmade glass

bulb E27







# ART DECO LAMPS

DECADENCE COLLECTION



ART DECO SG



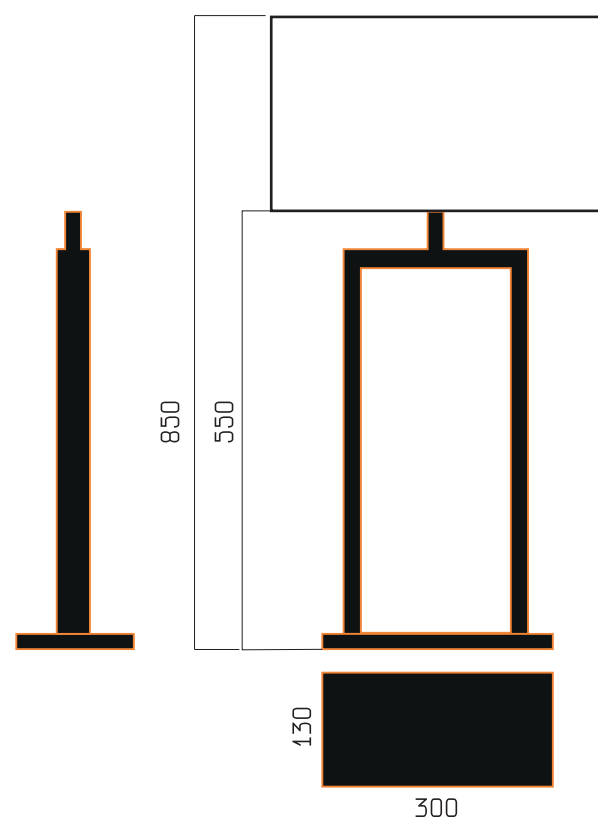
ART DECO GG



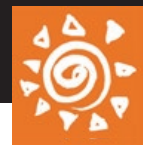
ART DECO GZ



ART DECO GZ2

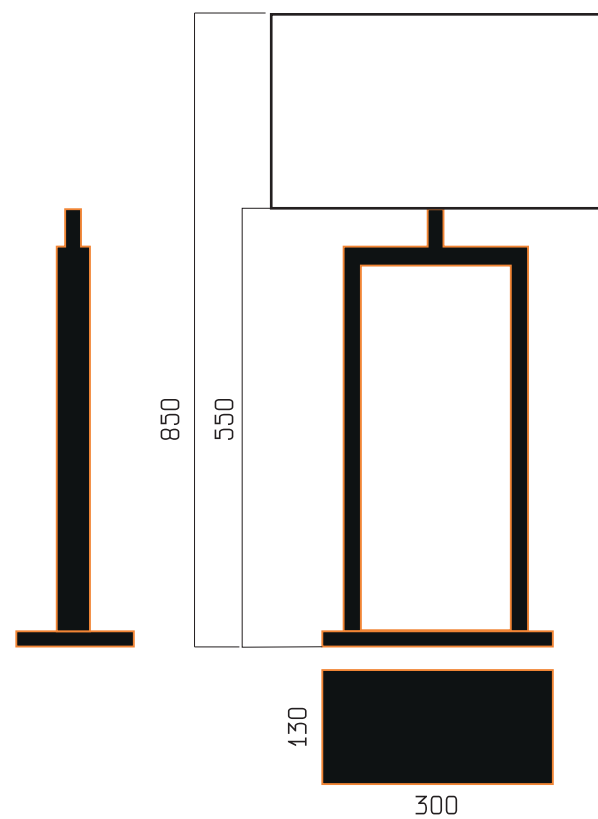






# GOLDEN RATIO

DECADENCE COLLECTION

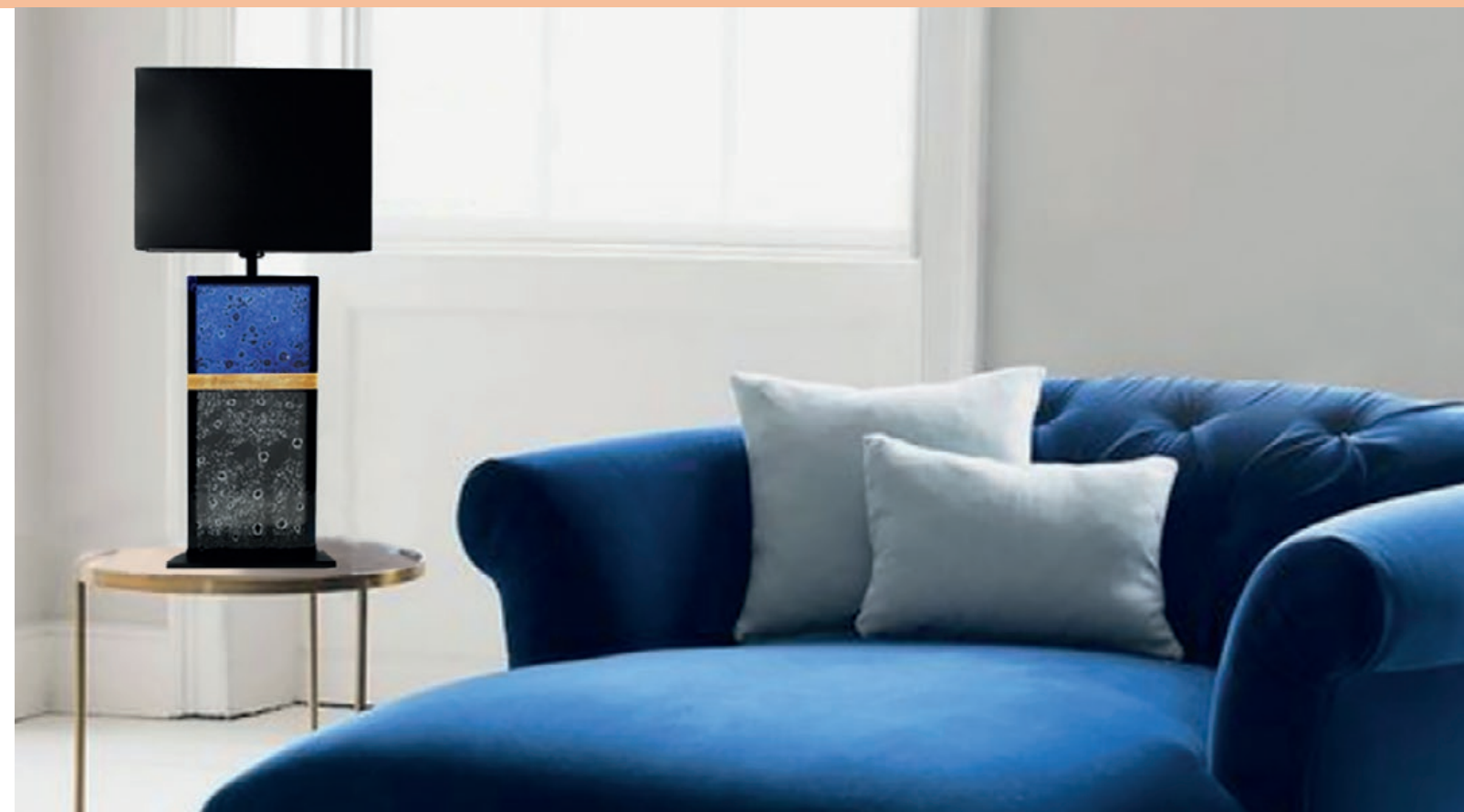


## Materials

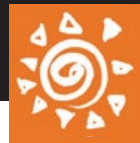
painted steel or stainless steel

handmade glass

bulb E27

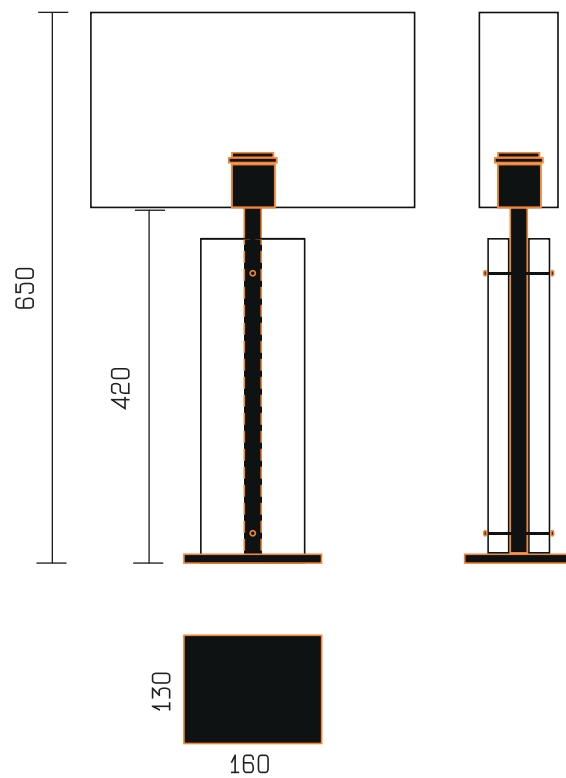






# GOLDEN RIVER

DECADENCE COLLECTION



## Materials

painted steel or stainless steel

handmade extra thick 3D glass

bulb E27

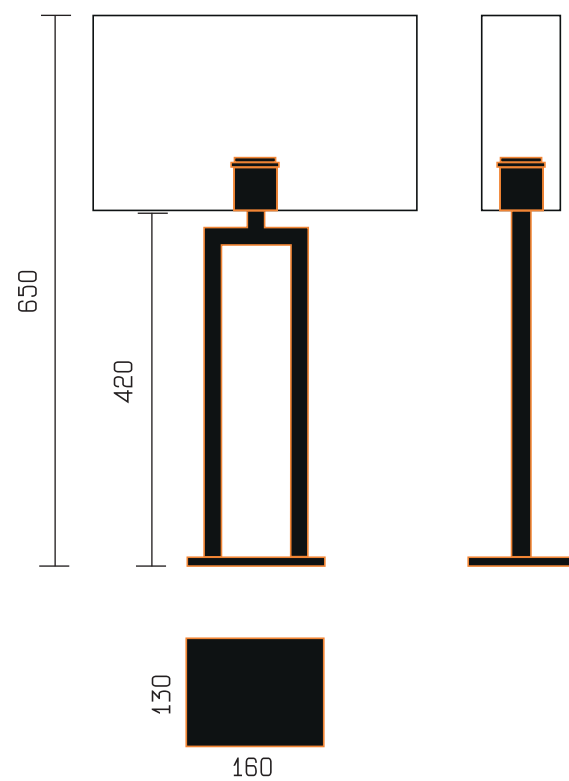






# GOLD VOLCANO

DECADENCE COLLECTION



## Materials

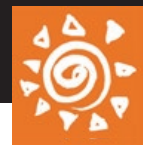
painted steel

handmade extra thick 3D glass

bulb E27







# TABLE LAMPS

DECADENCE COLLECTION



BLACK&WHITE



SILVER WOOD

## Materials

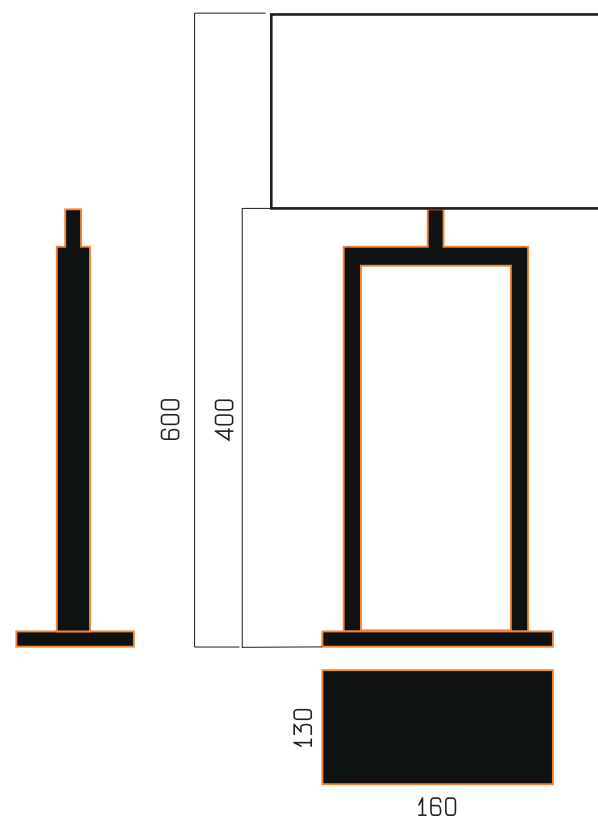
painting steel

handmade glass

bulb E27



BLACK&WHITE





# FURNITURE



Glass, especially when well-lit, wonderfully suits the creation of unique reception cabinetry, kitchen worktops, big and small tables, walls and stairs. A type of glass that is very rare in the world is extra thick 24-30 mm fused glass. When illuminated with LED, this glass captivates with 3D effects impossible to achieve with other material. The glass produced by us is available in different colors and textures.

# & TOPS





# INFINITY 3D

## THICK GLASS COLLECTION

INFINITY is a circular vortex of spherical objects falling inwards towards an infinite vanishing point, like suns pulled into a black hole at the heart of each galaxy.

Geometric design often features in our creations. Each circle is slightly recessed to create a drop-shadow effect creating the illusion of three-dimensional depth. Antisol bronze glass offers the choice of transparent, gold or silver enamel finishes. As a table, this is functional yet thought-provoking.

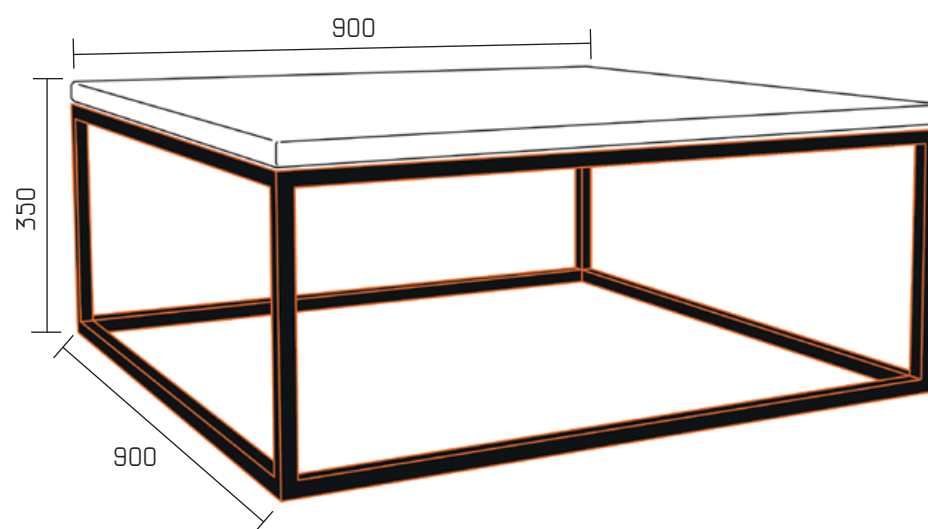
INFINITY is an elegant design evoking the sublime sophistication of Art Deco.



## Materials

handmade extra thick  
3D glass 24 mm

painted steel



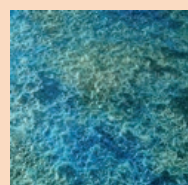




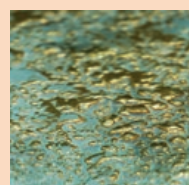
# INFINITY 3D

THICK GLASS COLLECTION

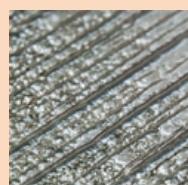
## BASIC COLORS



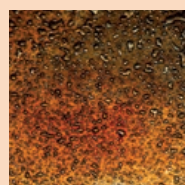
TRANSPARENT



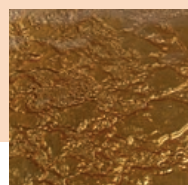
GOLDEN  
RIVER



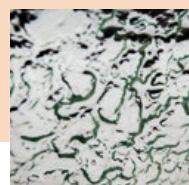
WOOD  
SILVER



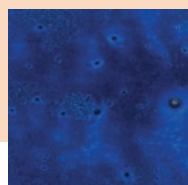
RED



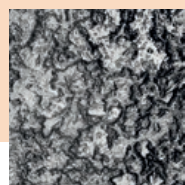
GOLD



CLEAR



COBALT

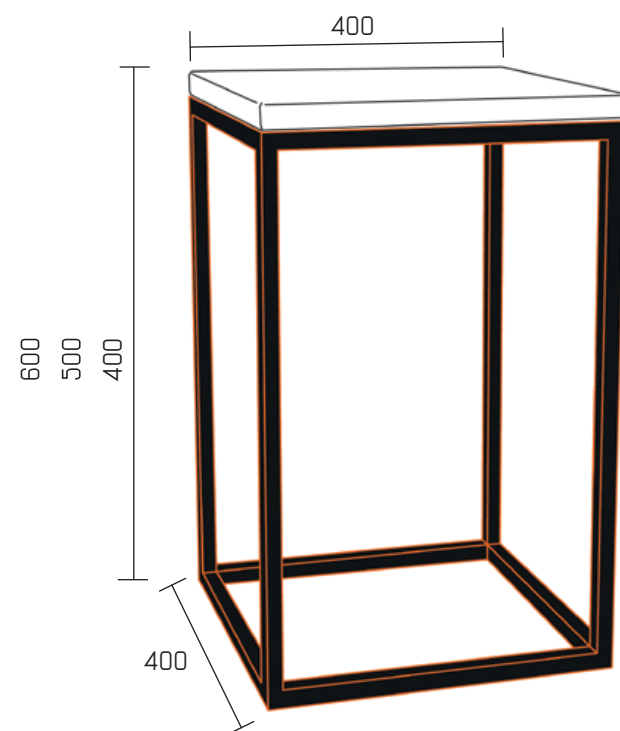


SILVER



## Materials

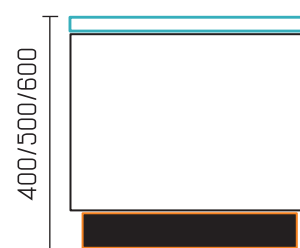
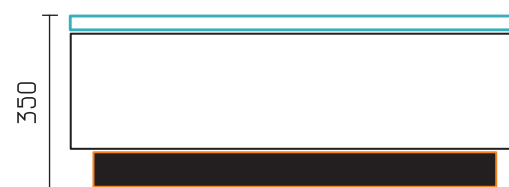
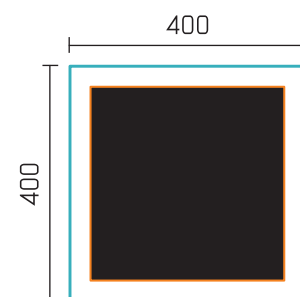
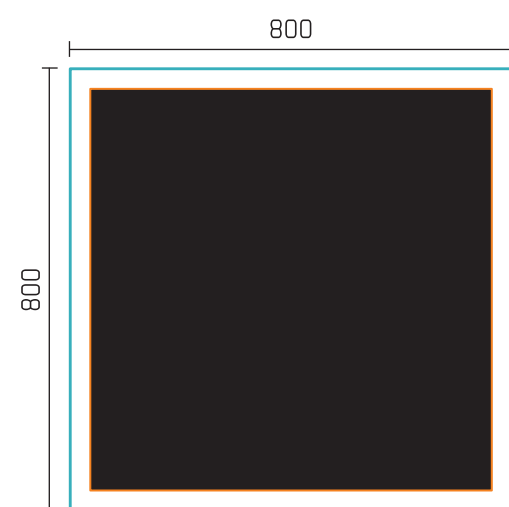
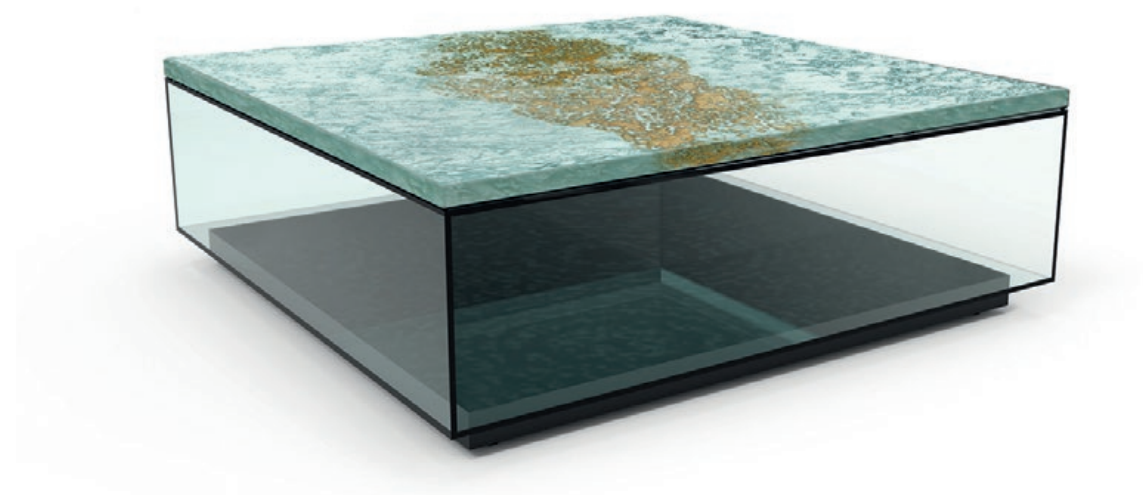
handmade extra thick  
3D glass 24 mm  
painted steel







# AQUARIUS



## Materials

handmade extra thick  
3D glass 24 mm

glass legs

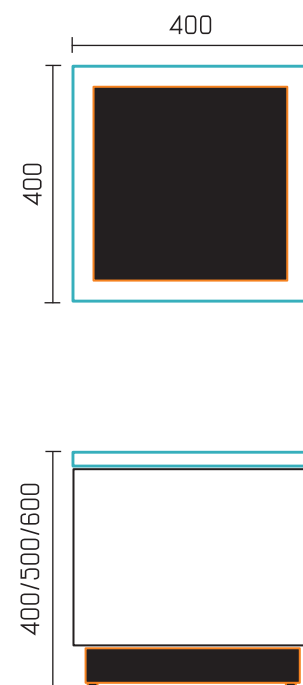
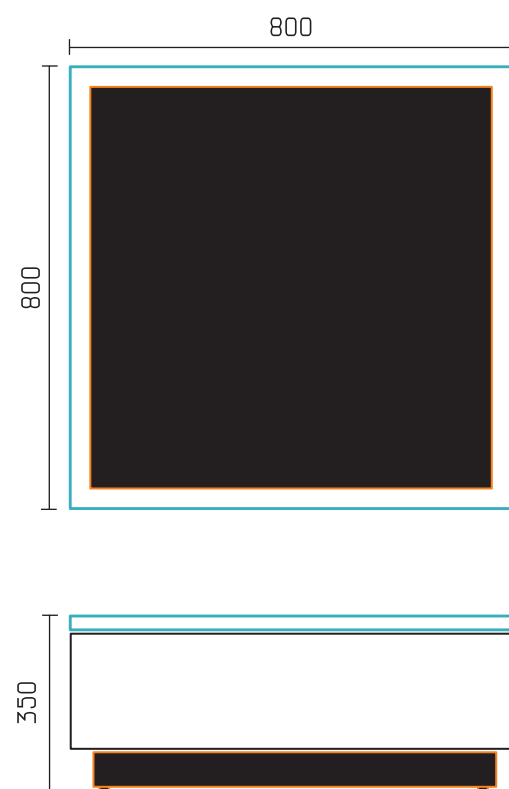
black MDF







# AQUARIUS

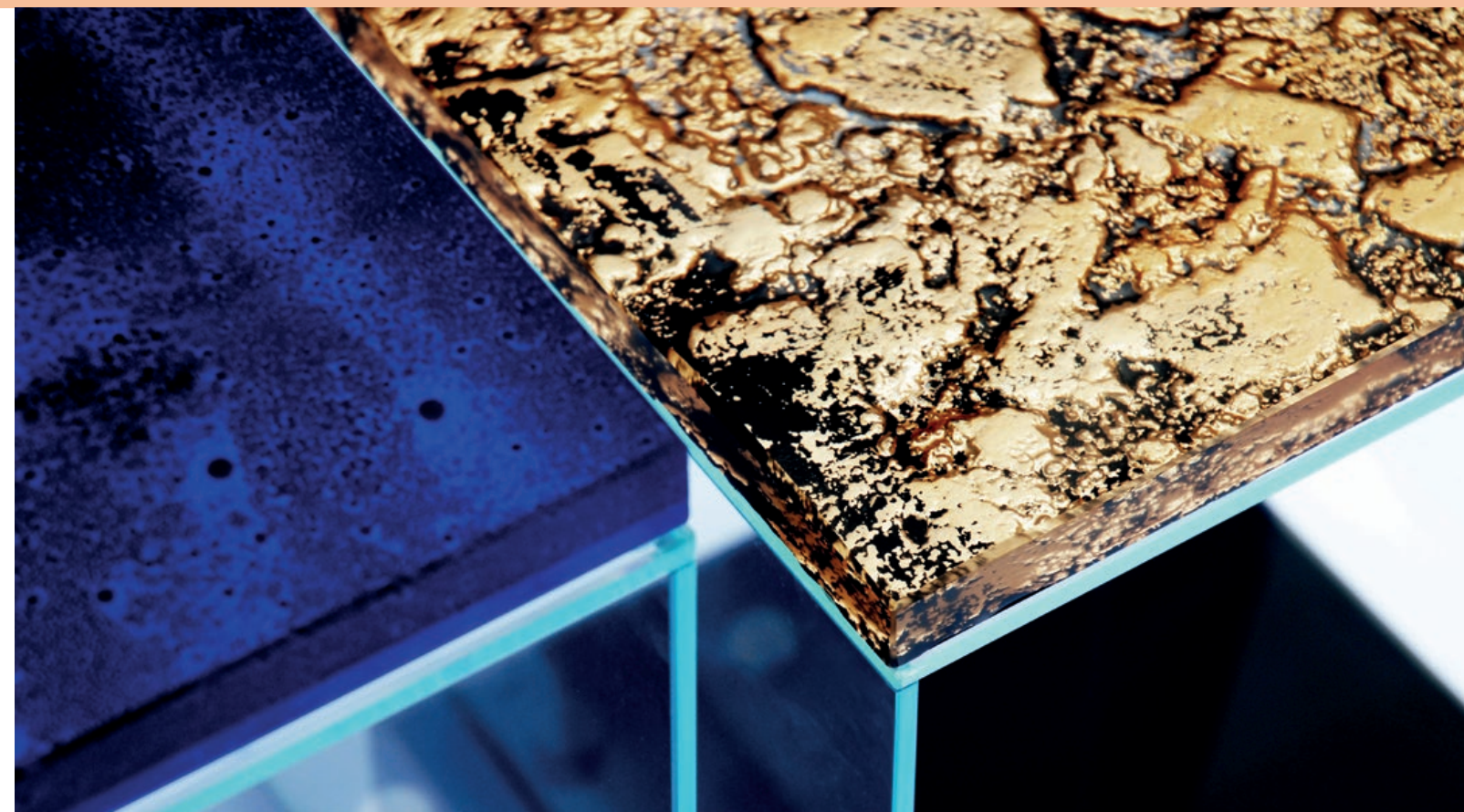


## Materials

handmade extra thick  
3D glass 24 mm

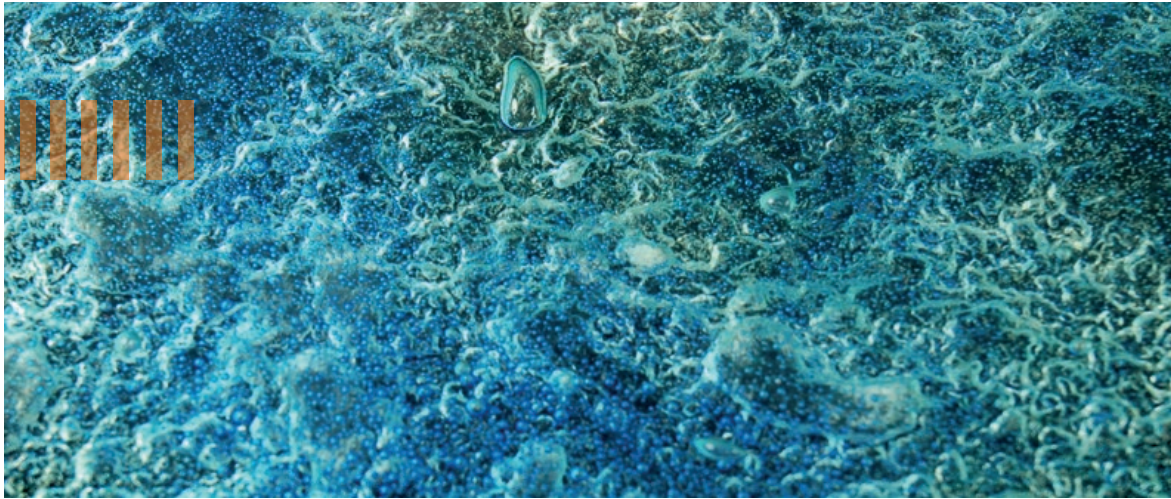
glass legs

black MDF

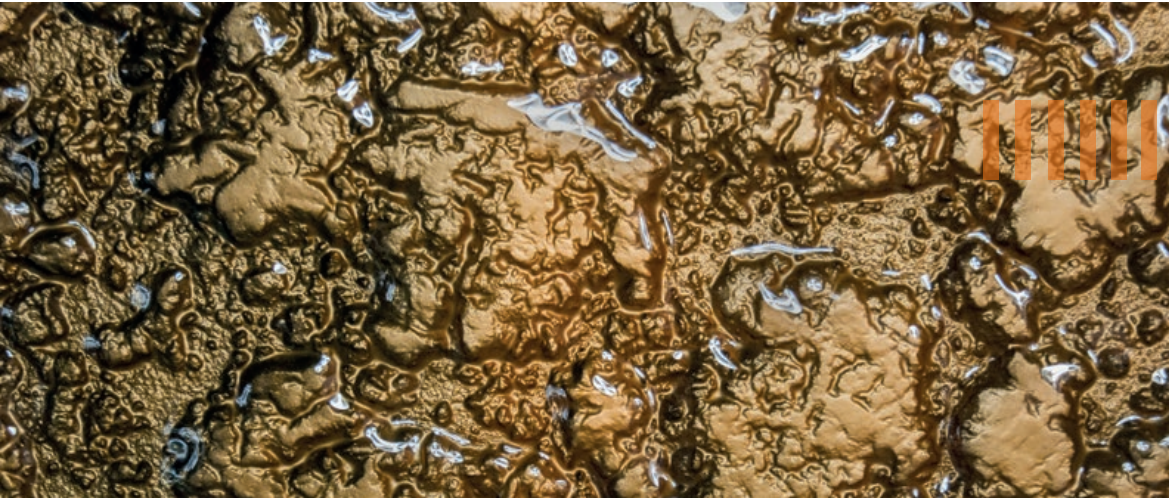




VOLCANOBLUE



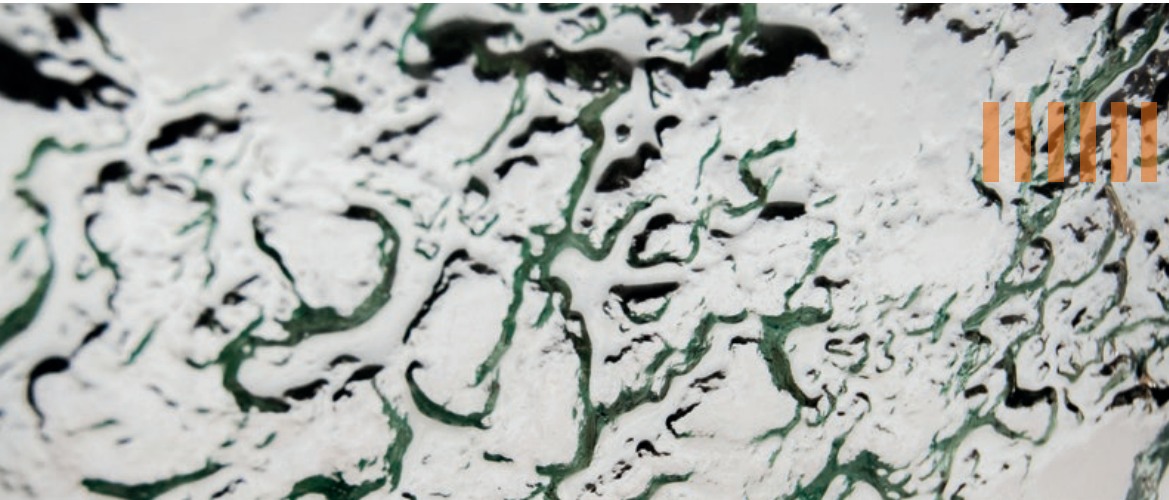
VOLCANOGOLD



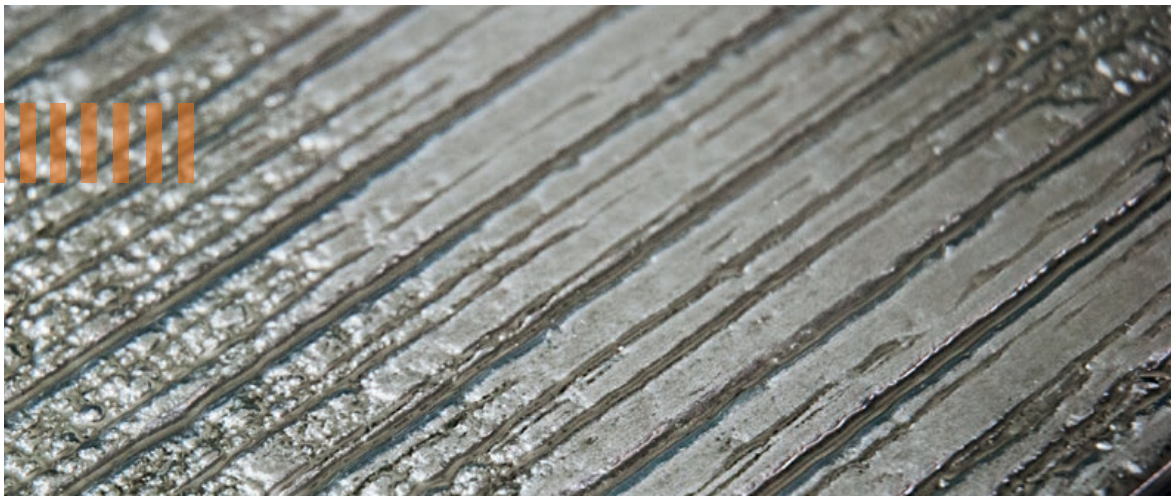
GOLDEN RIVER



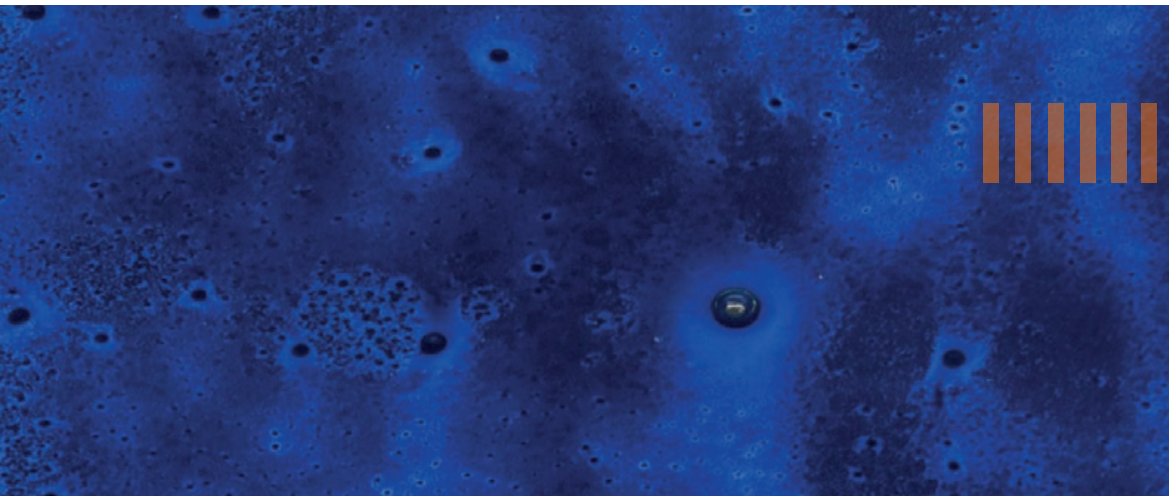
VOLCANOCLEAR



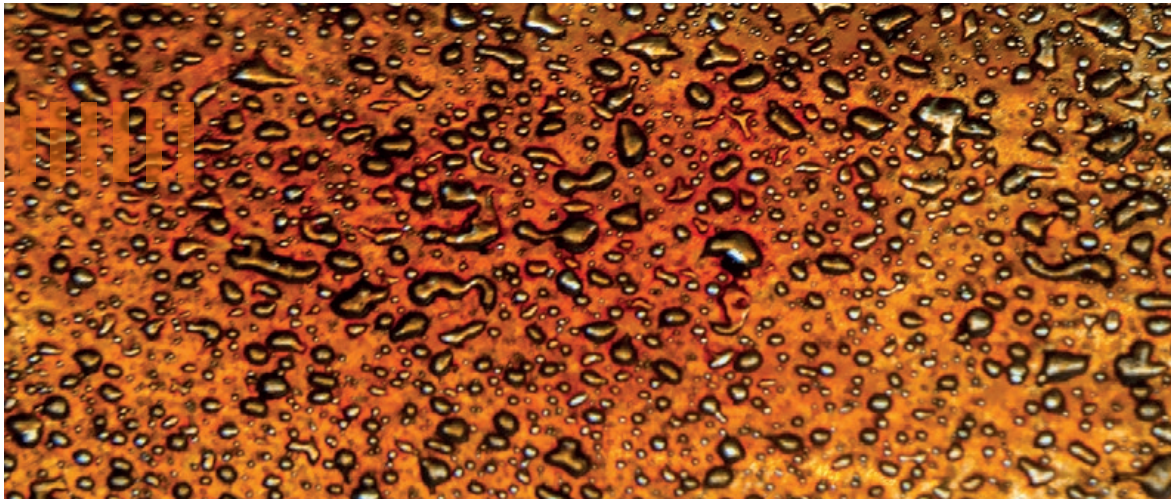
WOODSILVER



COBALT



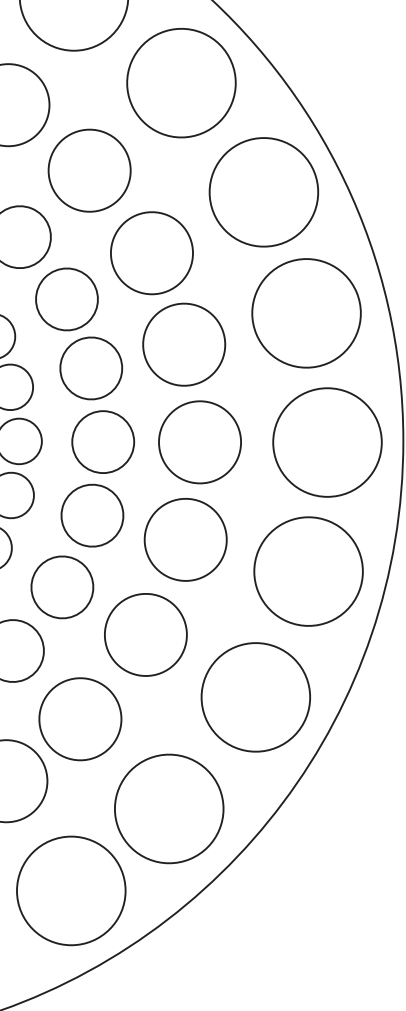
VOLCANORED



VOLCANOSILVER







# DROPS

DROPS is a circular vortex of spherical objects falling inwards towards an infinite vanishing point, like suns pulled into a black hole at the heart of each galaxy.

Geometric design often features in our creations. Each circle is slightly recessed to create a drop-shadow effect creating the illusion of three-dimensional depth. Antisol bronze glass offers the choice of transparent, gold or silver enamel finishes. As a table, this is functional yet thought-provoking.

DROPS is an elegant design evoking the sublime sophistication of Art Deco.



## Materials

### Coffee tables

handmade glass tops 8 mm  
metal black legs  
or stainless steel

### Mirrors

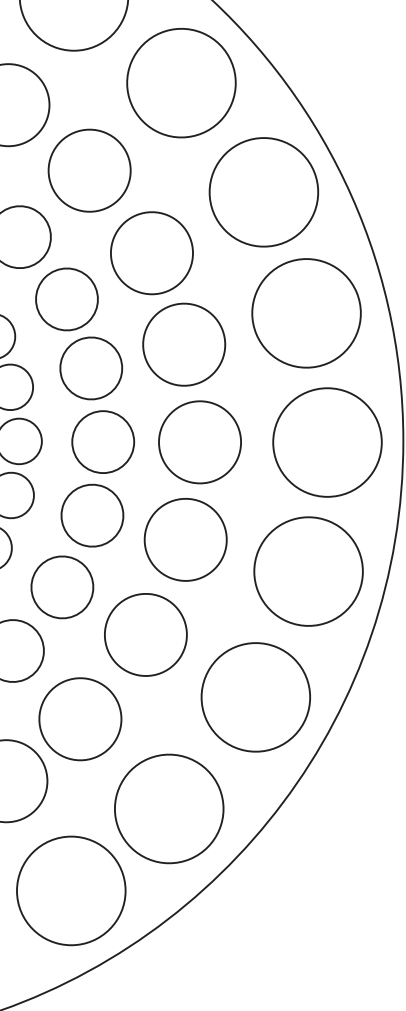
Dia 70/90 cm  
handmade glass frame  
Wall artworks  
Dia 70/90 cm  
coloured handmade glass

### Bowl

Dia 40 cm  
coloured handmade glass







# DROPS

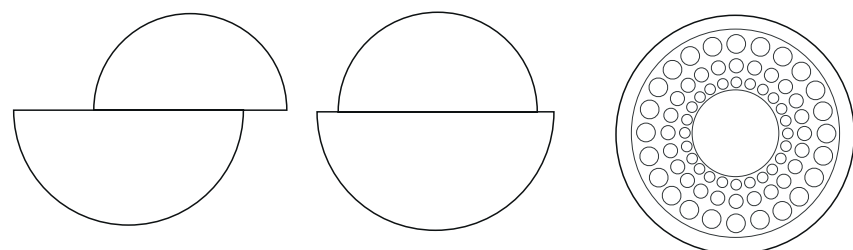


## Materials

**Coffee tables**  
handmade glass tops 8 mm  
metal black legs  
or stainless steel

**Mirrors**  
Dia 70/90 cm  
handmade glass frame  
Wall artworks  
Dia 70/90 cm  
coloured handmade glass

**Bowl**  
Dia 40 cm  
coloured handmade glass



Wall artwork



Mirror







# MOON SHADOW

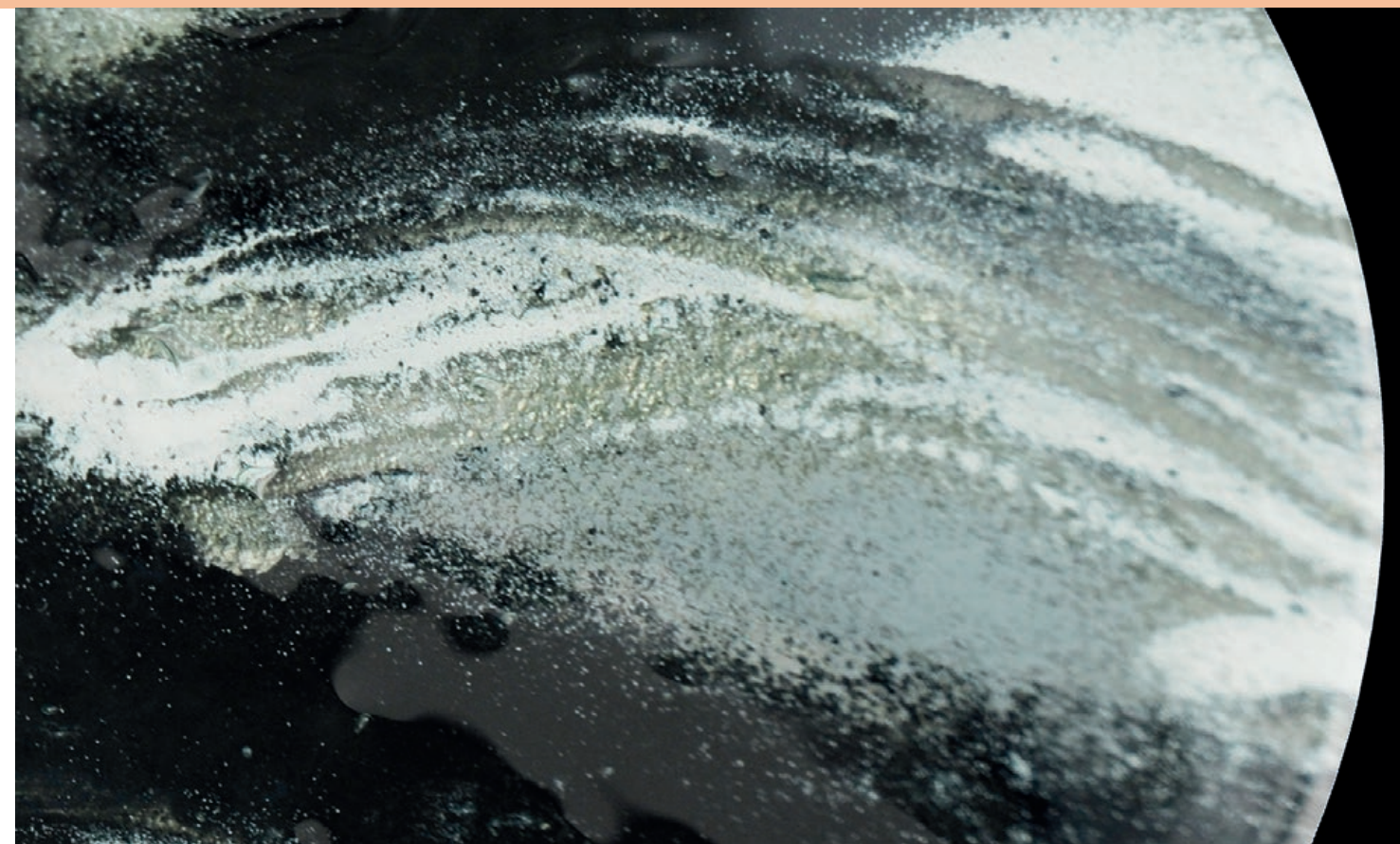
Moon shadow is produced using metal oxide colours and textural effects to re-create a vision of full moon on a clear evening. By fusing two layers of handmade glass together this combines all of the elements into one strong, heat treated, glass surface.



## Materials

Coffee tables  
handmade glass tops 8mm

metal black legs  
or stainless steel







# MOON SHADOW



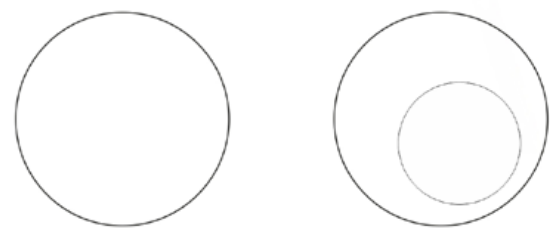
## Materials

**Coffee tables**  
handmade glass tops 8 mm  
metal black legs  
or stainless steel

**Mirrors**  
Dia 70/90 cm  
handmade glass frame

**Wall artworks**  
Dia 70/90 cm  
coloured handmade glass

**Bowl**  
Dia 40 cm  
coloured handmade glass







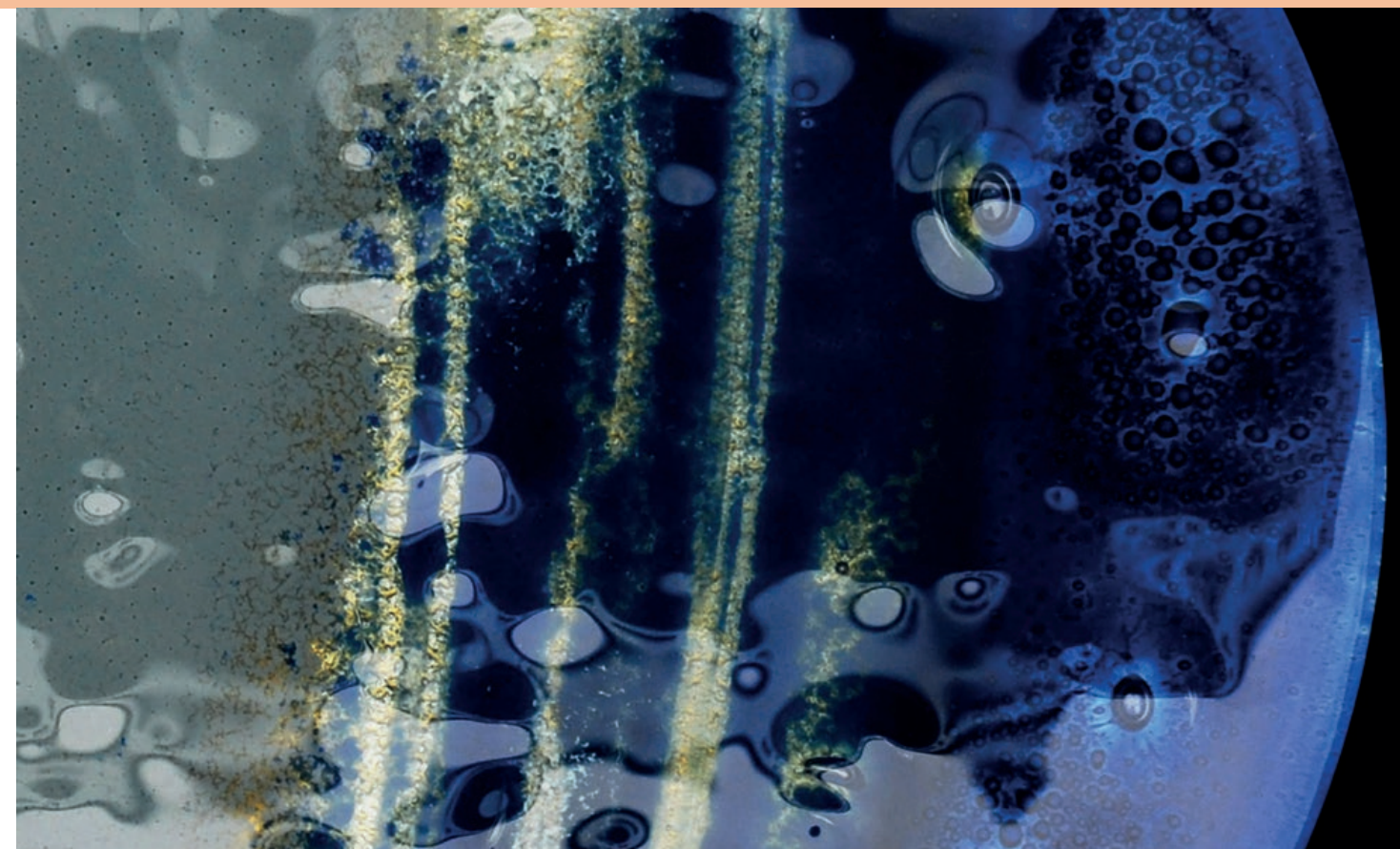
# BIG BLUE

Big Blue was inspired by our planet's appearance during the day and night. In the daytime the sunlight enhances the deep blues of the ocean, highlighting the white water from waves as they tumble and crash onto the shoreline. On the dark side we see textures but all in a muted palette of greys.



## Materials

handmade glass 8mm  
stainless steel or black metal







# BIG BLUE



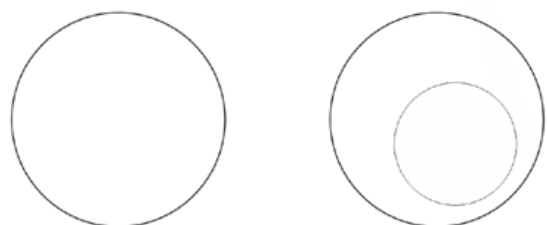
## Materials

**Coffee tables**  
handmade glass tops 8mm  
metal black legs  
or stainless steel

**Mirrors**  
Dia 70/90 cm  
glass frame

**Wall artworks**  
Dia 70/90 cm  
coloured glass

**Bowl**  
Dia 40 cm  
coloured glass







# GOLDEN RIVER

Golden River is constructed using three layers of handmade glass. The base layer is textured and has a dull gold paint effect added to represent a meandering golden river that travels through the glass. Using three layers of glass adds a real visual 3D depth to the table top which further enhances the base texture and paint.



## Materials

handmade extra thick  
3D glass 24 mm  
stainless steel legs







# GOLDEN RIVER



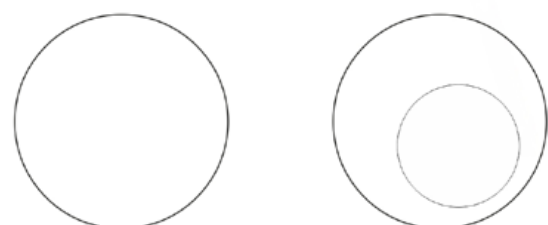
## Materials

Coffee tables  
H 35/45/55 cm  
Dia 50/70/90 cm  
glass tops  
metal black legs  
or stainless steel

Mirrors  
Dia 50/70/90 cm  
glass frame

Wall artworks  
Dia 50/70/90 cm  
coloured glass

Bowl  
Dia 30 cm  
coloured glass







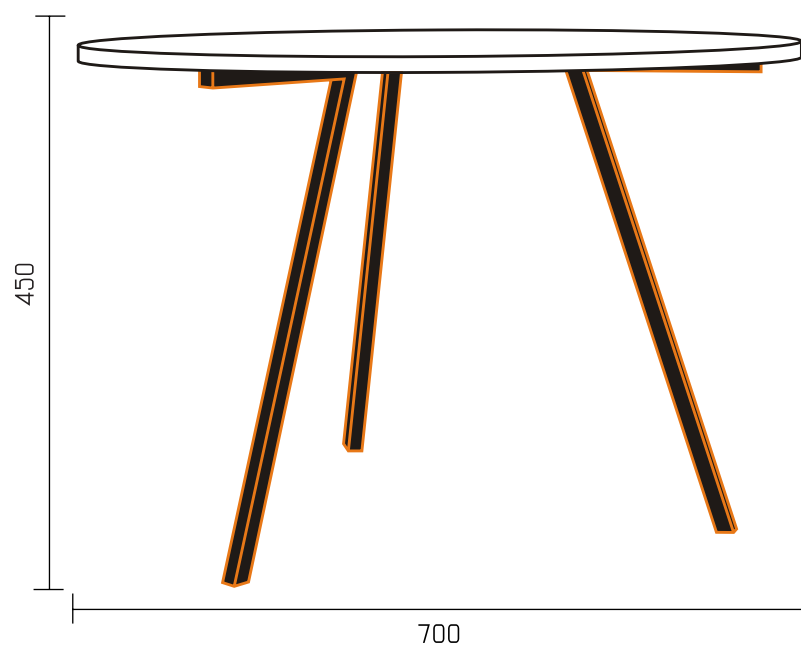
# GOLD LEAF

GOLD LEAF, shallow waters rich in gold sediment with fragments of gold leaf floating above, captures the dream of the Californian Gold Rush and brings splendour and opulence to any setting.

The effect is created by melding thin metal strips into layers of fused glass. Fusing three layers of glass creates three-dimensional depth, enhancing the textured and gold-painted finish of the base-layer.



## Materials



handmade 3D glass tops 16mm  
stainless steel legs  
size 40x55 ; 70x45 ; 90x35

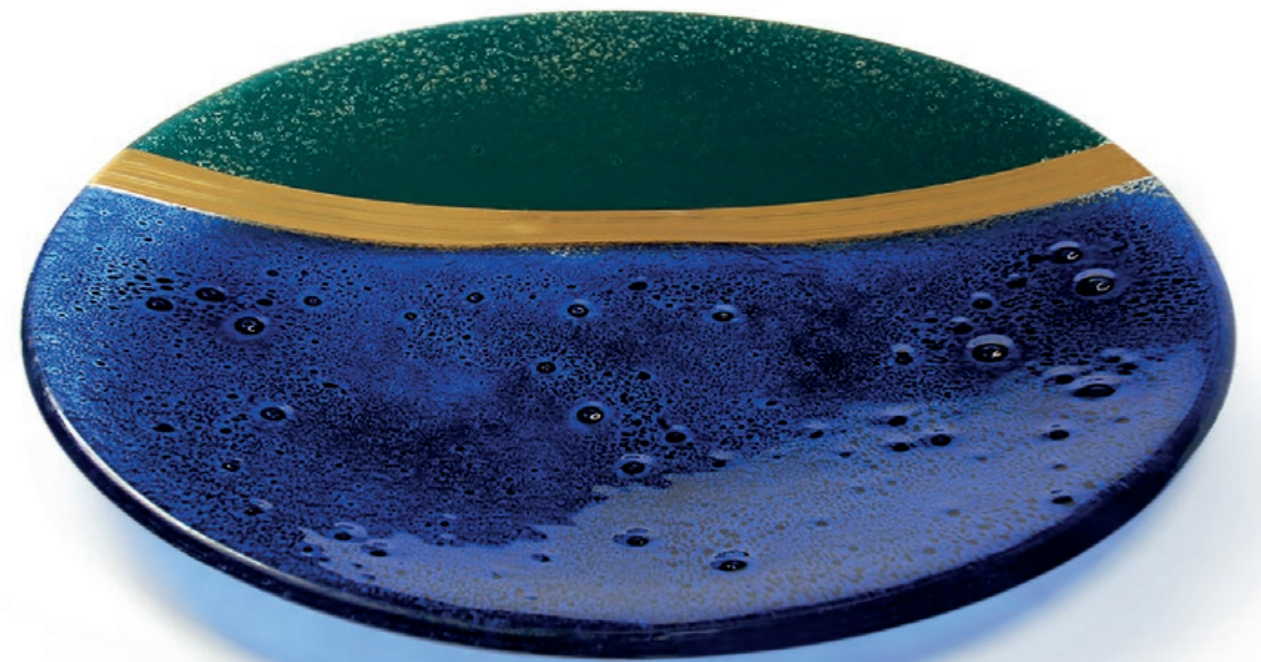






# BOWLS

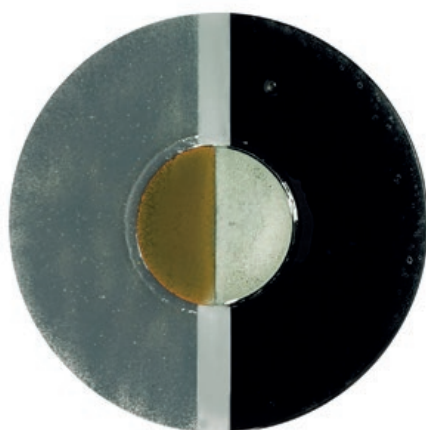
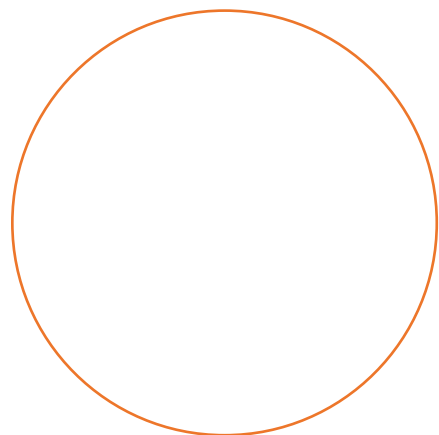
DECADENCE COLLECTION



## Materials

handmade glass  
(Murano glass technique)

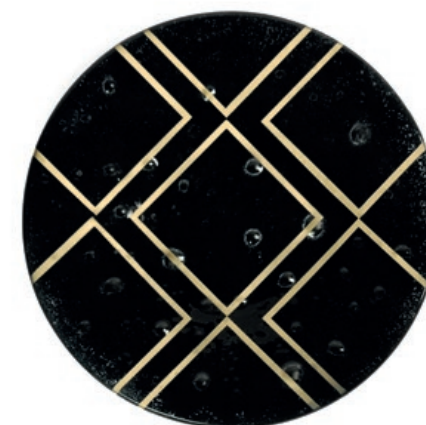
400



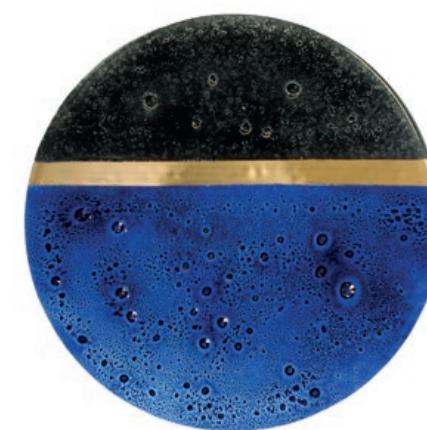
5TH AVENUE



GOLD ARROW



DECADENCE



GOLDEN RATIO  
BLUE



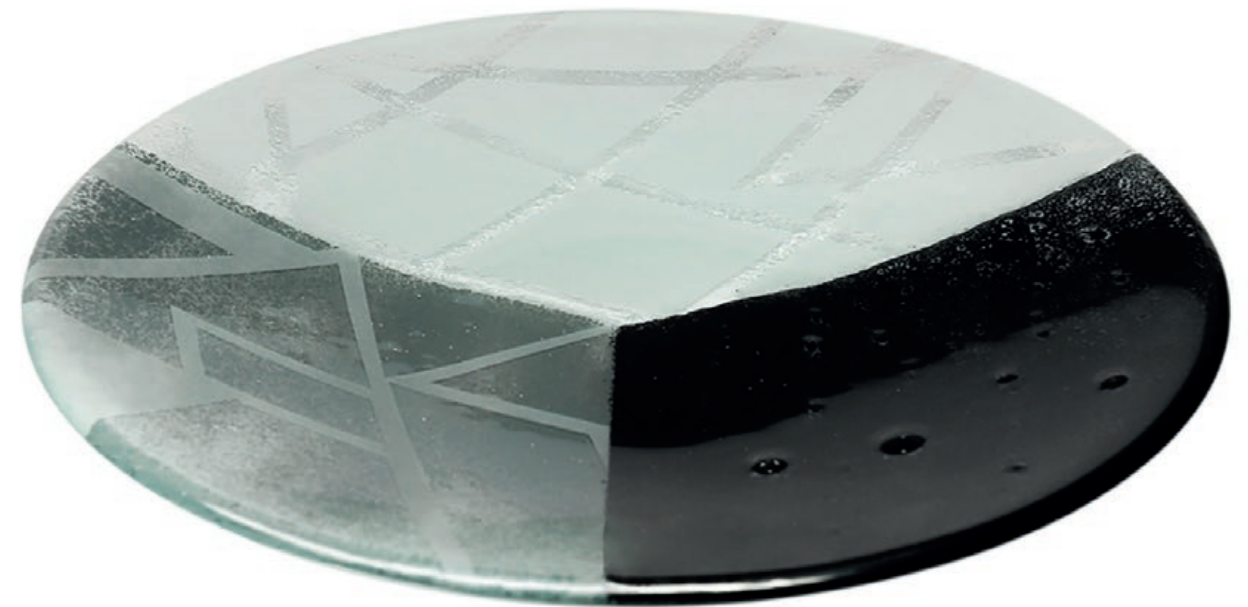
GOLDEN RATIO  
GREEN





# BOWLS

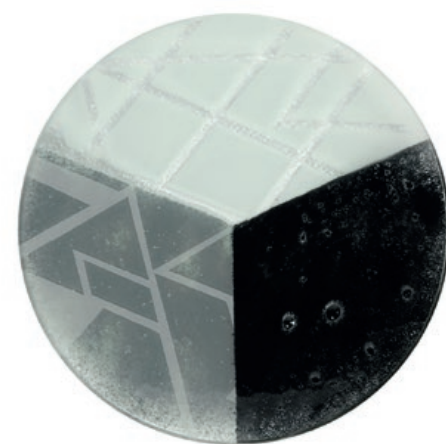
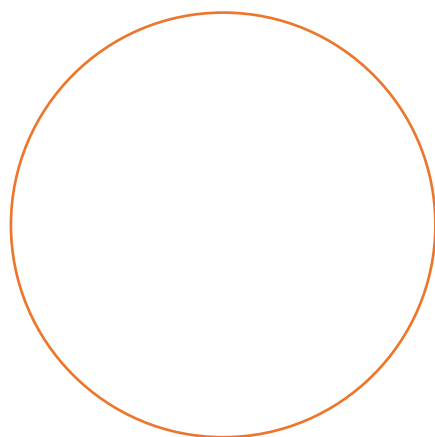
SCANDI COLLECTION



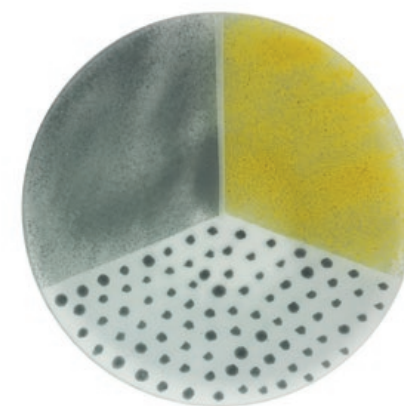
## Materials

handmade glass  
(Murano glass technique)

400



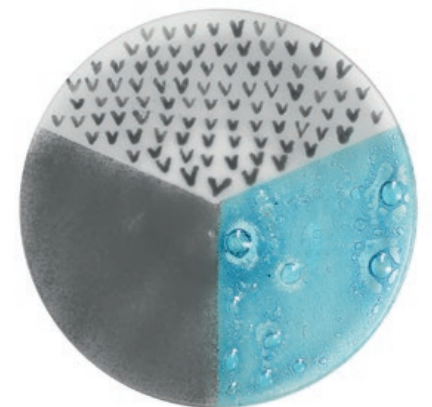
STOCKHOLM



SCANDI 1



SCANDI 2



SCANDI 3





# BOWLS

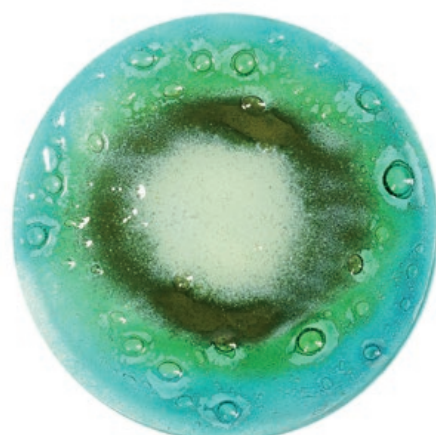
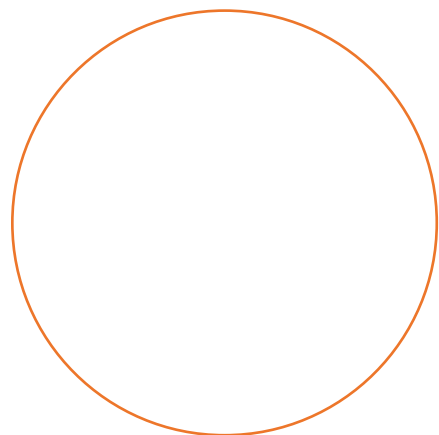
URBAN JUNGLE



## Materials

handmade glass  
(Murano glass technique)

400



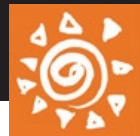
LAKE



URBAN JUNGLE



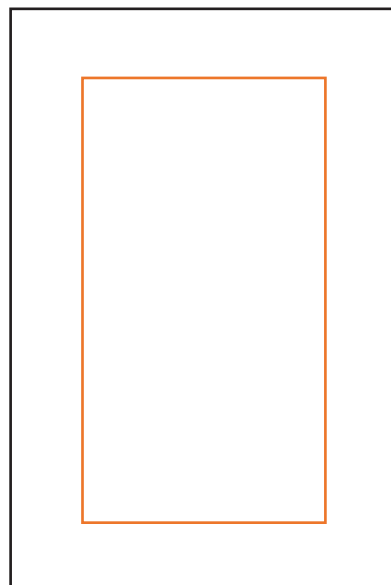




# MIRROR

VOLCANO SILVER

80/100



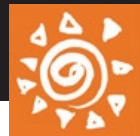
120/160

mirrors with handmade glass frames

size 900x900 / 100x160 / dia 700



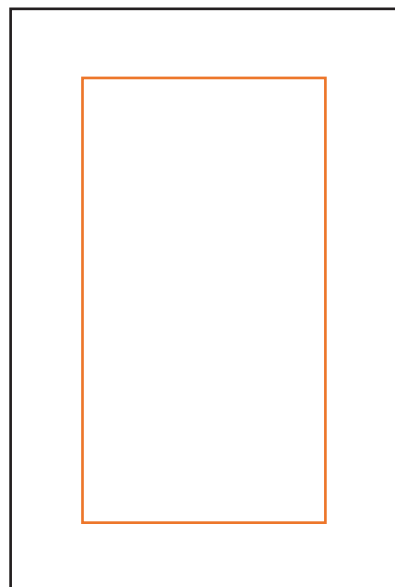




# MIRROR

VOLCANO GOLD

80/100



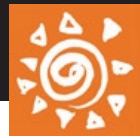
120/160

mirrors with handmade glass frames

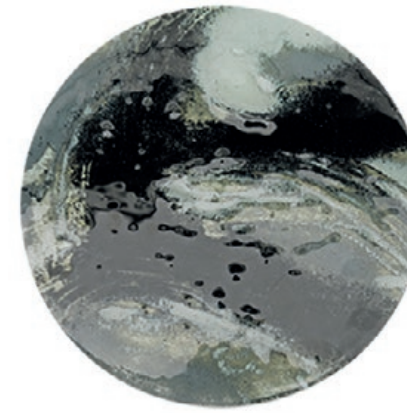
size 900x900 / 100x160 / dia 700







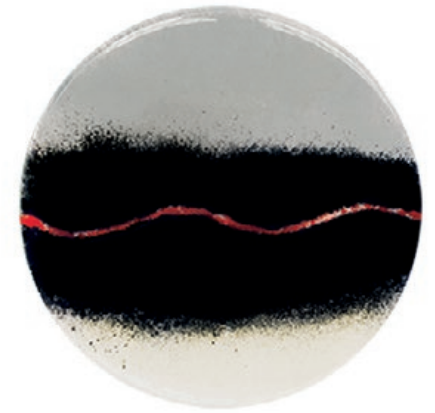
# TOPS



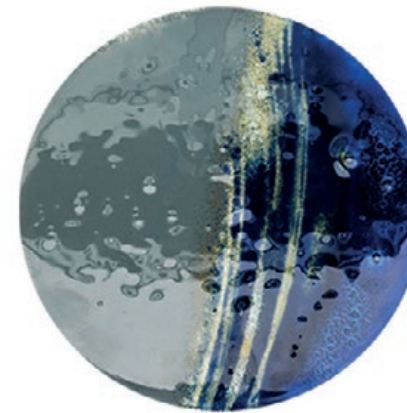
Moon Shadow



Basic Gray



Red Line



Big Blue



Desert Sand



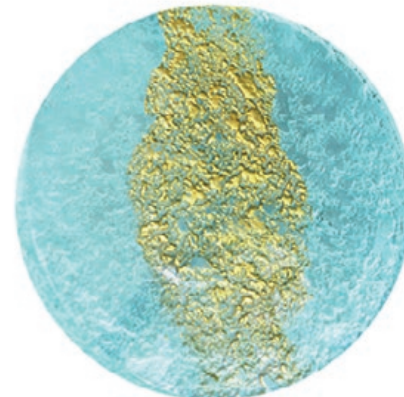
Desert Sun



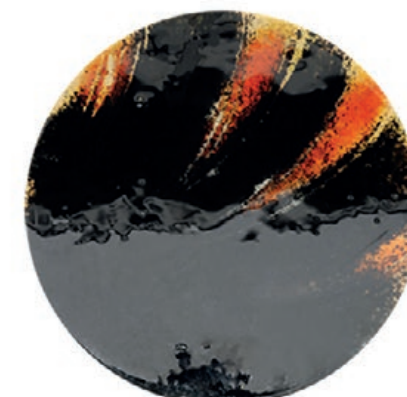
Gold Leaf



Gold Flower



Golden River



African Dream



Basic Green



Gold Ears



Golden Drops



Drops



Silver Drops



Basic Red



Red Ring

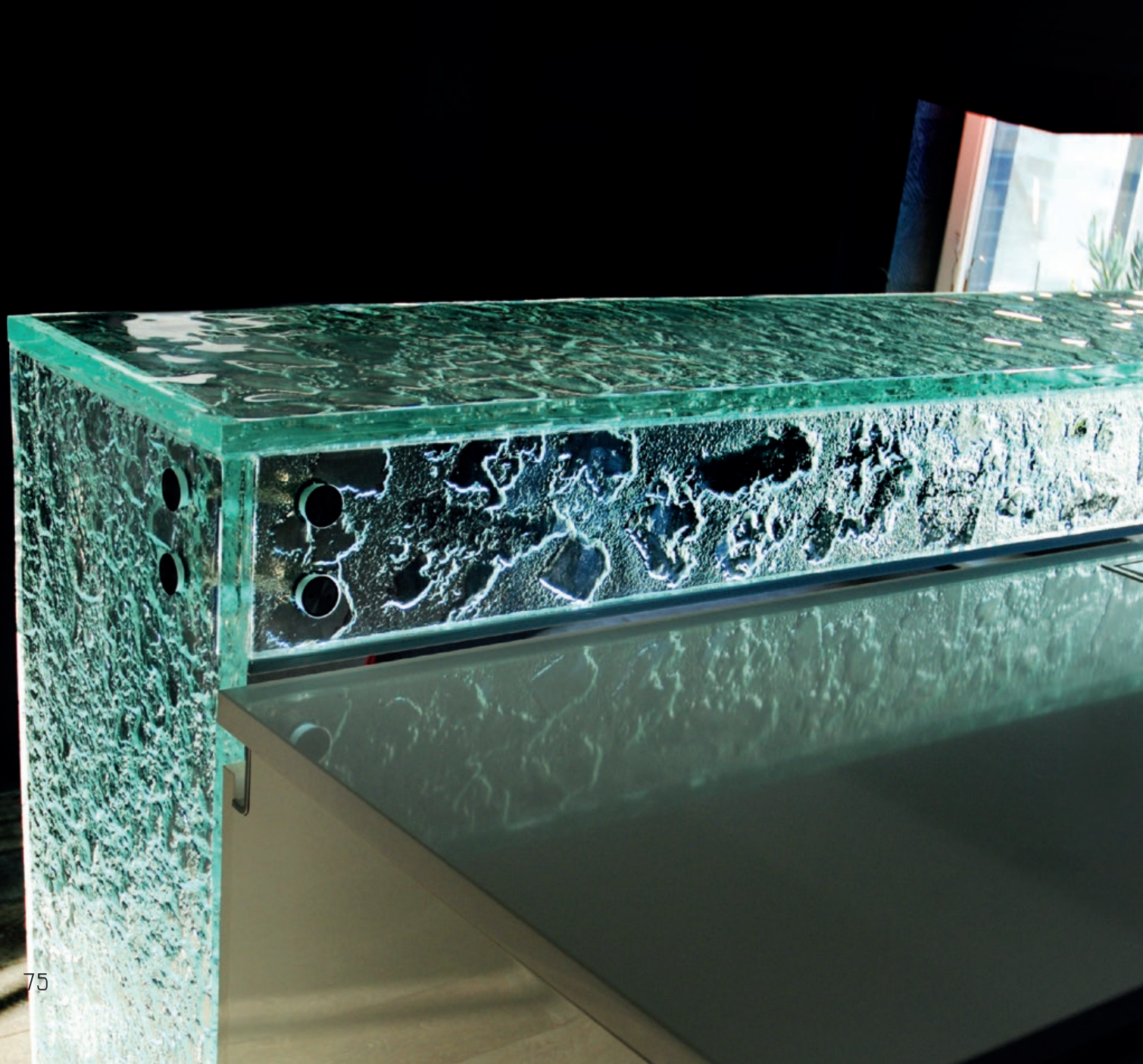


Gold





## TABLE TOP





Edyta Baranska Design

Aleja Niepodległości 646  
81-854 Sopot

[www.baranskadesign.com](http://www.baranskadesign.com)

FB @baranskadesign  
Instagram @baranskadesign  
Twitter @baranskadesign

[sekretariat@baranska.pl](mailto:sekretariat@baranska.pl)

+48 608 682 470

+48 58 555 04 03

[international@baranska.pl](mailto:international@baranska.pl)

[baranskadesign@gmail.com](mailto:baranskadesign@gmail.com)

Aldona Design Limited

Heath Cottage

7 Blind Lane

Lambourn

West Berkshire

RG17 8PP

[aldonadesign.com](http://aldonadesign.com)

[info@aldonadesign.com](mailto:info@aldonadesign.com)

