

caracole



FUSION CHAIRSIDE TABLE

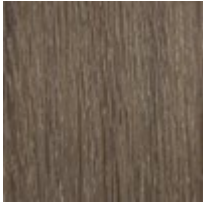
m051-017-412

COLLECTION: MODERN FUSION

DIMENSIONS: 14W x 26D x 24H

Impressive in its simplicity, this rectangular end table outshines others. Its classic shape is crafted from thick-cut quartered oak veneers and accentuated with an Ashen Oak finish. A bottom shelf adds visual interest and functionality—creating a must-have addition for any living space.

FINISH:



Ashen Oak



Warm Slate